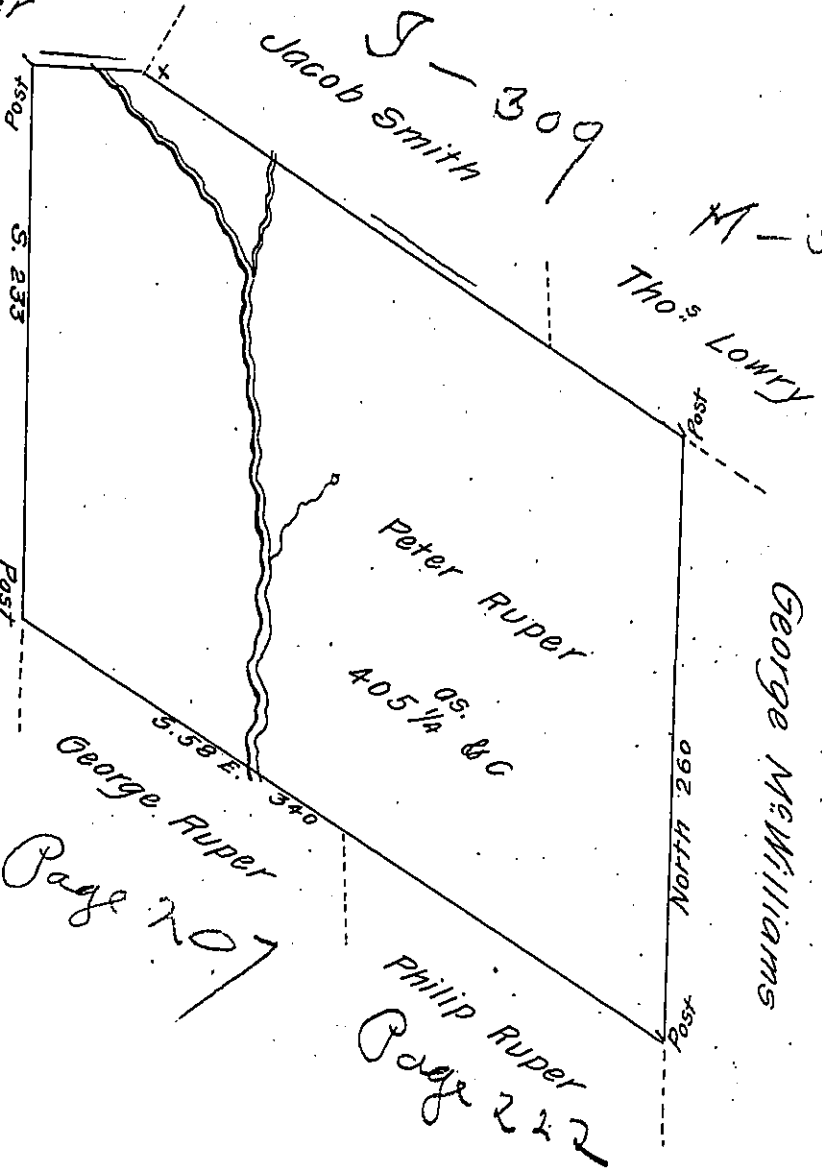


FORM No 1.

D-30-293

Wm Moulder

802-62-2  
Paul Ruper



Page 207

Philip Ruper  
Page 222

A Draught of a tract of land Called — Situate on the N.E. Branch of  
 Susqua<sup>a</sup> — in the Great Bend joining land sur<sup>(copy)</sup> for Paul Ruper in the  
 County of Northum<sup>a</sup>. Containing four hundred & five acres 1/4 & allow<sup>e</sup> of  
 six # Cent. for roads &c. Surveyed for Peter Ruper the 30<sup>th</sup> day of May  
 1785 in pursuance of a warrant dated the 4<sup>th</sup> day of April 1785.

To John Lukens Esqr.  
 Survt. Genl. }

by Wm Gray D.S.

IN TESTIMONY that the above is a copy of the original remaining on file in  
 the Department of Internal Affairs of Pennsylvania, made  
 conformably to an Act of Assembly approved the 16th day of  
 February, 1833, I have hereunto set my Hand and caused  
 the Seal of said Department to be affixed at Harrisburg,  
 this ~~twenty-seventh~~ day of January 1908.

*Henry Buckle*  
 Secretary of Internal Affairs.